



Assessment services



Syllabus management



Learning teaching platform

The best LMS for modern teaching & learning

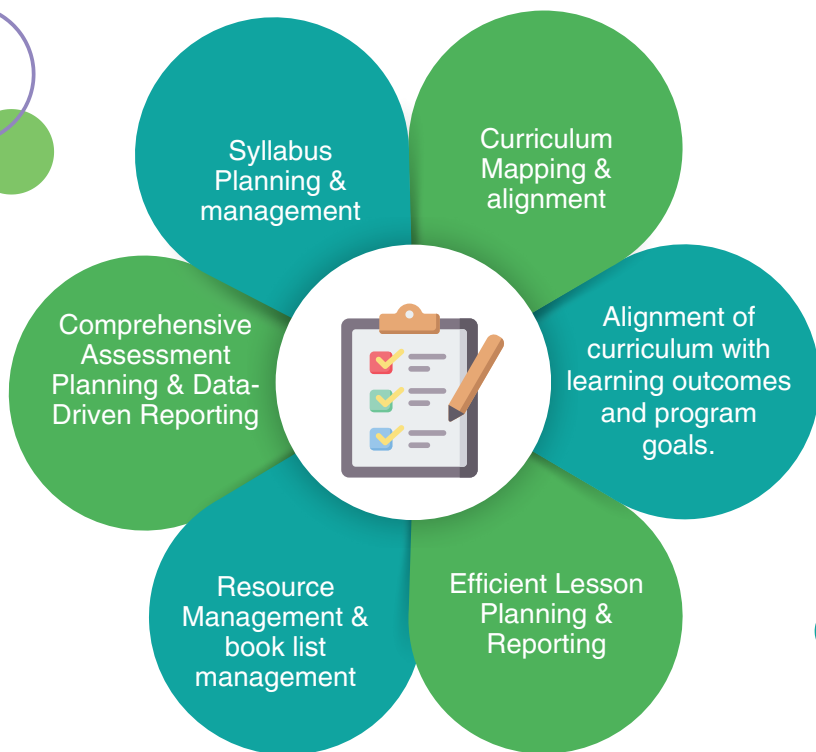
Scholar clone is a more than decade old company providing education technology solutions below is LMS detail.

- Streamline Learning: Centralized course management and tracking.
- Engage Learners: Interactive tools for better motivation.
- 24/7 Access: Learn anytime, anywhere with mobile support.



Curriculum planning & syllabus management

NEP 2020 & NCF Aligned



Structured Learning Pathways:

Curriculum mapping creates a clear educational path, boosting comprehension and retention.



Improved Monitoring & Reporting:

Tracking ensures timely progress checks, allowing for interventions and better student outcomes.

Outcome-Based Education:

Aligning curriculum with goals guarantees students gain the required skills and knowledge.



Efficient Lesson Delivery:

Streamlined lesson planning helps teachers focus on delivering engaging and consistent lessons.

Resource Optimization:

Effective resource management ensures timely availability of materials for improved learning.



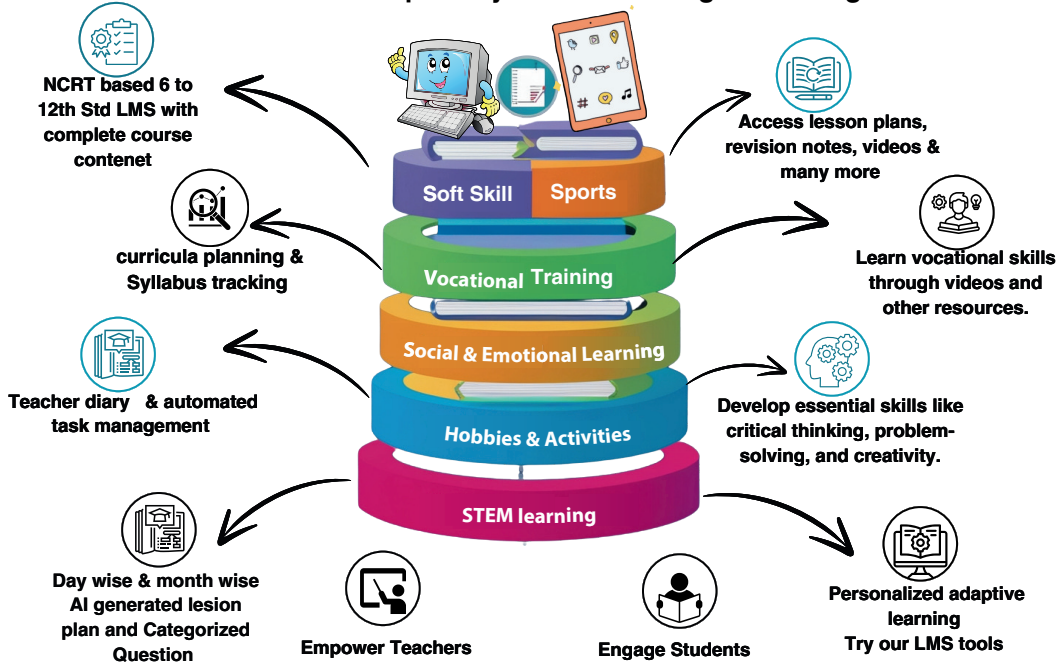
Enhanced Assessment Strategy:

Planned assessments offer fair evaluations and transparent achievement tracking.



Multi-Tiered teaching & learning: improve Learning outcome From NCERT to 21st Century Skills

Skill And Competency based Teaching & Learning



Comprehensive Curriculum: Seamlessly integrates NCERT curriculum with additional skill-based learning for holistic development, ensuring students are future-ready.

Collaborative Learning: Fosters collaboration between teachers, students, and parents with access to reports and progress, creating a supportive learning environment.

Personalized Learning: Offers AI-driven, adaptive learning tailored to individual student needs, improving engagement and success rates.

Boosted Engagement: Engages students through a variety of learning modes like STEM, soft skills, sports, and emotional learning, catering to diverse learning styles.

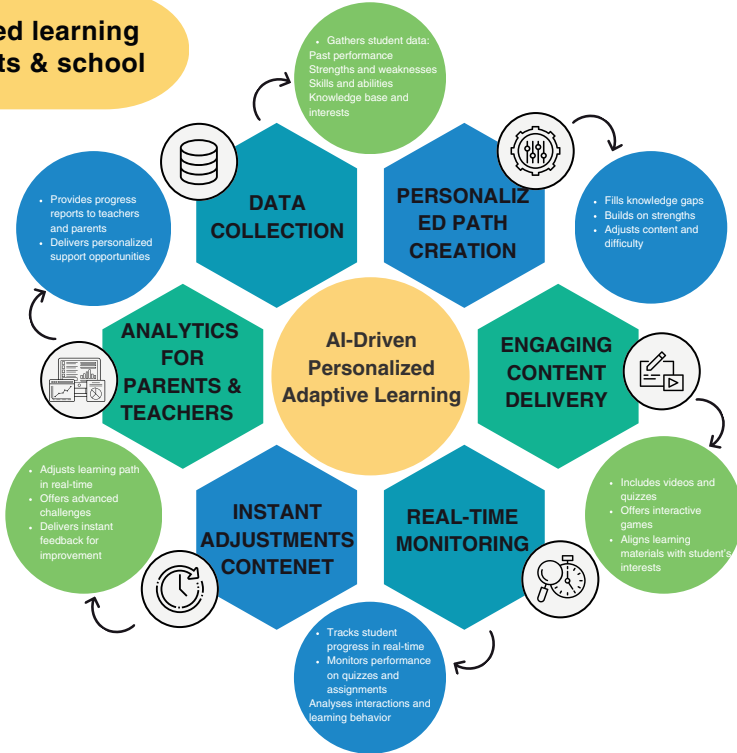
Skill Enhancement: Incorporates vocational training and essential life skills like critical thinking and problem-solving, preparing students for real-world challenges.

Teacher Empowerment: Simplifies syllabus tracking, lesson planning, and task management, giving teachers more time to focus on student growth.



Assessment services formative & summative assessment

Personalized learning for students & school



Standardize learning for school

Summative & formative assesment

Question is categorised by easy, medium, hard

Question Categorized by blooms taxonomy

Question paper generation

question is categorized with Skill, knowledge, interest, ability

50000 question bank

Assign & receive Homework & assignment



Benefits of LMS For principal, teacher & Student

Make data-driven decisions to boost school performance, ensure compliance, and enhance student success.



Ready to use course integrated with generative AI, scaffold your student as per their appetite

Hybrid learning help student to learn more, reduced work load stress free teaching environment



Streamline lesson planning and assessments, freeing up time to focus on personalized, student-centered teaching.

Experience a tailored education journey with engaging content, real-time feedback, and opportunities for holistic growth across academics, skills, and career development.

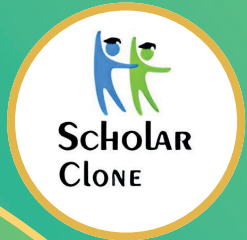


Learning become easy & fast, i can learn at my own pace wider level explanation

Focused learning & teaching for better results provide Personalised lessons based on individual needs,Content adjusts as learners grow



Our Valued Clients



COMPETITION TO COMPETENCE



SCAN NOW TO VISIT
OUR WEBSITE!



+91 98241 54142



kalpesh@triz.co.in



23, 2nd Floor, Sundar Chambers, Adajan Patia Circle, Rander Road, Surat - 395009, Gujarat (India)